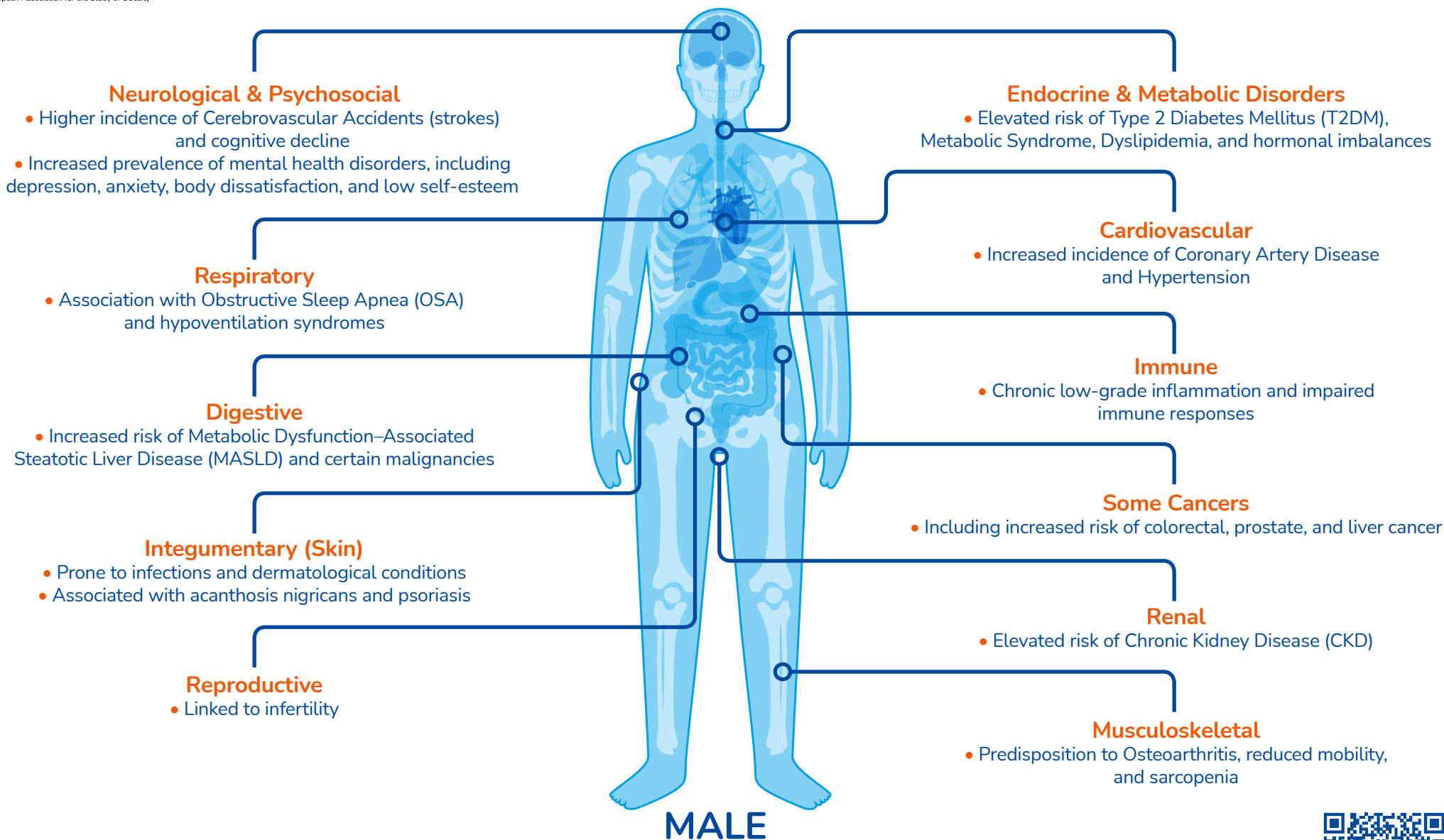


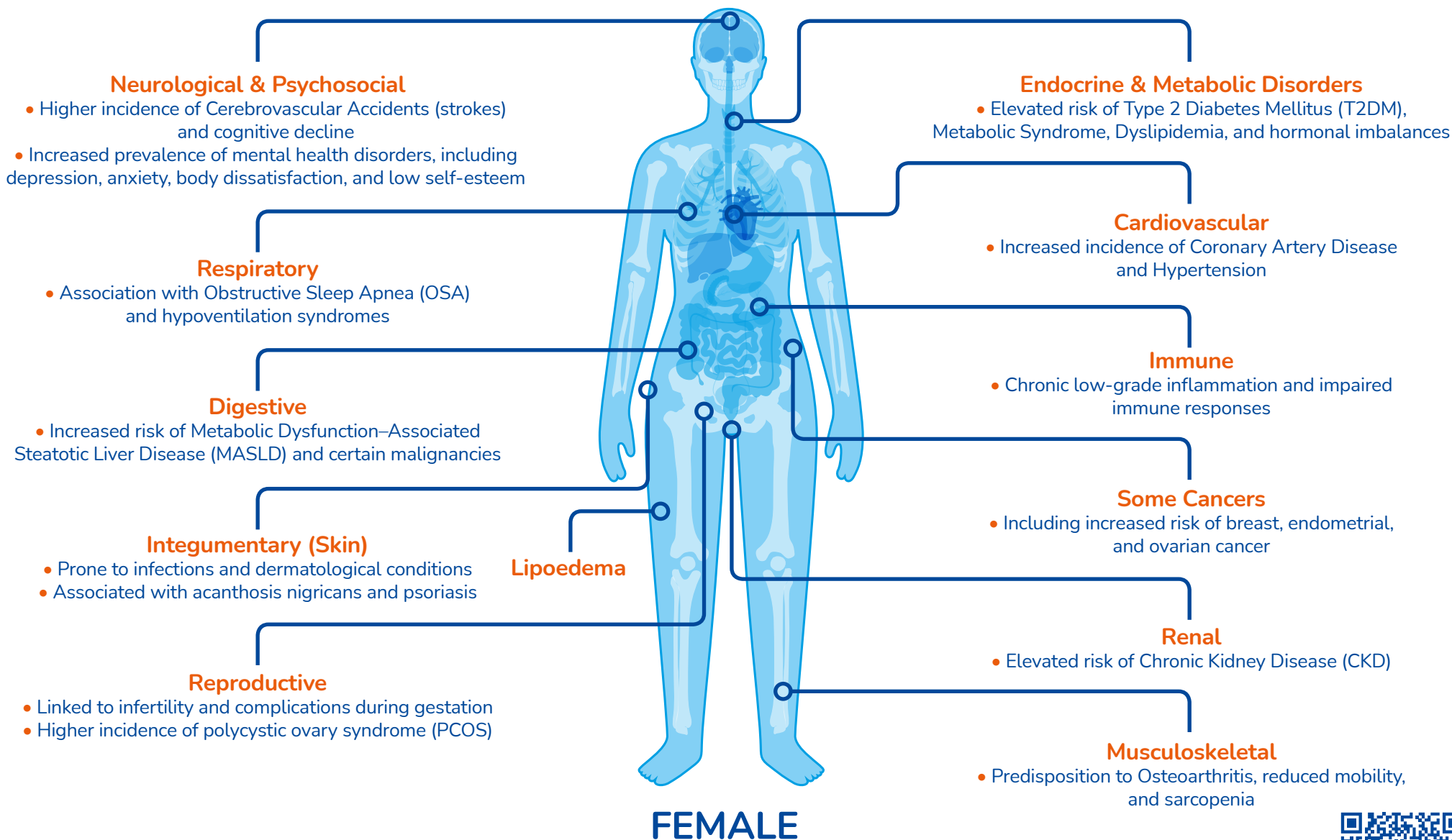
# OBESITY AND ITS IMPACTS ON HEALTH



**BMI  $\geq 30 \text{ kg/m}^2$  or BMI  $\geq 25 \text{ kg/m}^2$  and Waist to Height Ratio  $\geq 0.5$  with medical, functional or psychological impairments or complications**



# OBESITY AND ITS IMPACTS ON HEALTH



**BMI  $\geq 30 \text{ kg/m}^2$  or BMI  $\geq 25 \text{ kg/m}^2$  and Waist to Height Ratio  $\geq 0.5$  with medical, functional or psychological impairments or complications**

